

Series 1100A Liquid Level Switch

High/Low Pneumatic and Electric Liquid Level Switch

Accurate and durable in marine applications



Norriseal Series 1100A High/Low Level Pneumatic or Electric Switches utilize the Series 1001A Liquid Level Controller and a cast steel vertical displacer chamber.

Applications

- Gas Compressor Scrubbers
- Separators
- Sumps
- Safety Systems

Specifications

Chamber:

- 1480 psi W.P. (ANSI 600) at 100° F
- Process Connections:
 - 1.00" Screwed NPT; 1.00" Socket Weld;
 - 1.00" Butt Weld, 2.00" Flanged
- Cast Steel ASTM A216
- Displacer Material 300 Series SST
- Weight: 46 lbs.

Controller:

Pilot Action:

- Pneumatic – Snap (on/off)
- Electric – SPDT/DPDT (on/off)
- Maximum Temperature: 400° F
- Minimum Air Supply: 20 psi
- Minimum Specific Gravity:
 - 0.5 (Snap Pilot, SPDT)
 - 0.7 (DPDT)

Special Features

- Pneumatic or Electric Controller
- Stainless Steel Internals for Marine Service
- Weathertight Case
- Stainless Steel Displacer
- Left- or Right-Hand Mount
- Direct or Reverse Acting
- Optional NACE
- Optional 2220 psi W.P. (ANSI 900)

Contents

- 1 Specifications
- 2 Model Code
- 3 Dimensions



**Engineered
Performance**

Model Code

1. Specify Series 1100A.
2. Select model number.

PROCESS CONNECTION SIZE	
Size	Code
1.00	1
2.00 (Flanged Only)	2

PROCESS CONNECTION TYPE	
Type	Code
NPT (Screwed Female)	SC
Socket Weld	SW
Butt-Weld* SCH 40	B4
Butt-Weld* SCH 80	B8
Butt-Weld* SCH 160	B1
Flanged Raised Face	RF
Flanged Ring Joint	RJ

*End connections only.

PRESSURE RATING		
ANSI Class	WP (psi)	Code
150	285	02
300	740	07
600	1480	14
900	2220	21

BODY/CHAMBER MATERIAL	
Mode	Code
A696 WCC	-
A696 WCC/NACE	N
316 CF8M/NACE	R
316 CF8M (316)	S

PILOT MODE	
Mode	Code
Elec. DPDT Explosion Proof	D
Elec. SPDT Explosion Proof	E
Pneumatic Snap w/Gauges	S

PRESSURE CONNECTION ORIENTATION

Code	Type
—	NPT – Specify Plug Placement
A*	Side Top / Side Bottom
B*	Side Top / Bottom
C*	Top / Side Bottom
D*	Top / Bottom

*Required if welded or flanged connections.

1 SC 14 - S R D F - B K

CLOSURE – CASE	
Code	Type
H	Sealed Case / Cover & Piped Exhaust
J	Sealed Case / Cover, Piped Exhaust & Marine Service
K	Sealed Case / Cover Marine Service (Standard)

SERVICE CONDITION	
Code	Condition
B	Standard/Bronze 0-60 Gauges
E	Liquid Filled SST Gauges
F	Standard/SST Gauges

SEAL/BEARING MATERIAL	
Code	Material
F	Viton/SST*

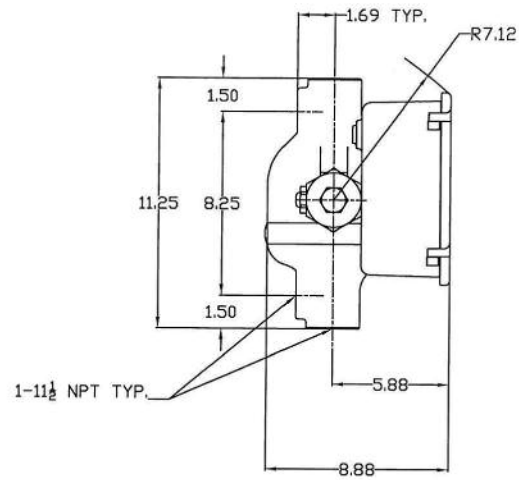
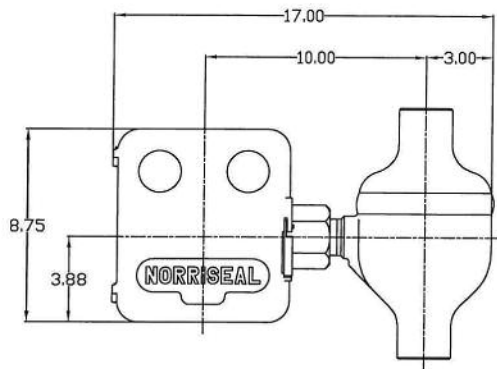
*Std. seal/bearing material. Consult factory for options.

PILOT ACTION	
Code	Type
R	Reverse Acting
D	Direct Acting

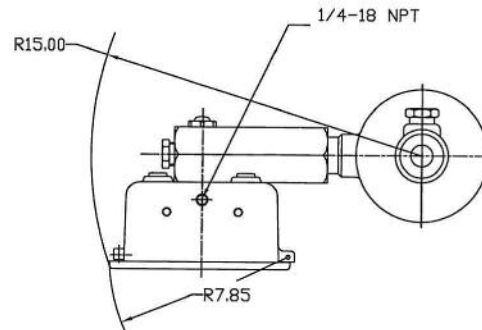
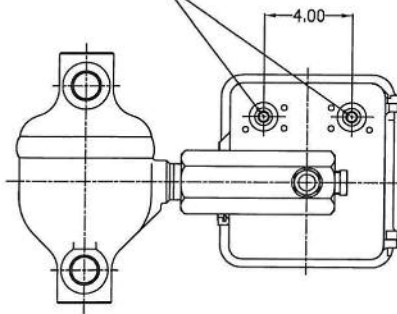
MOUNTING CASE	
Code	Style
L	Left Hand
R	Right Hand

Please note: not all available options are shown.

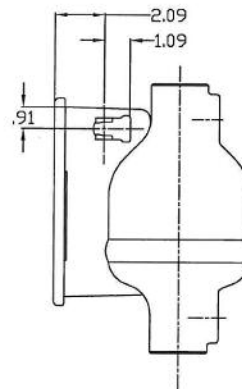
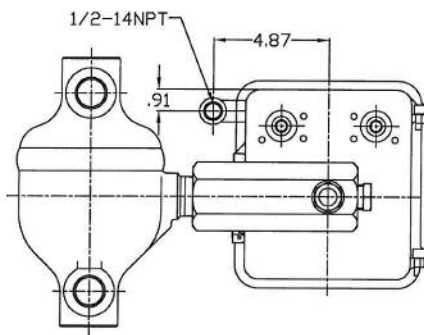
Right-hand Mount, Pneumatic Pilot



SUPPLY & OUTPUT CONNECTIONS
1/4-18 NPT



Left-hand Mount, Electric Switch



Note: All dimensions in inches; all dimensions are applicable for 1.00" NPT, socket weld and butt weld.

Why you can depend on genuine Norriseal products

- In-house engineering and technical support
- In-depth applications experience
- Award-winning innovation and ongoing product development
- ISO 9001:2008 certified manufacturing
- Over five decades of industry service
- Compliance with all industry standards and specifications
- Responsive service and prompt delivery
- Field support available worldwide

Please contact your Norriseal representative for more details and assistance in specifying the optimal solution for your application.



Tel: 713-466-3552
Fax: 713-896-7386
www.norriseal.com



Tel: (780) 434-8566
Fax: (780) 434-4267
www.albertaoiltool.com