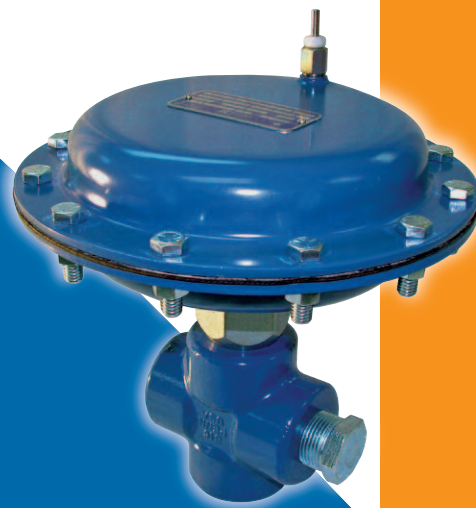


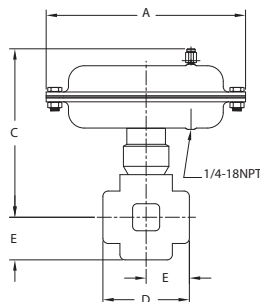
# Series 2275 Low Cost Control Valve

## Quality and Economy:

The ideal 1-inch dump valve



*The Series 2275 one-inch control valve is ideal for use as a dump valve in high- or low-pressure liquid service on separators, dehydrators, etc. The 2275 can also be used as a back pressure or reducing valve when used with a pressure pilot.*



ACTUATOR DIMENSIONS		
Size	A	C
9	9 1/2	9.00

SCREWED BODY DIMENSIONS		
Body Style	D	E
Globe	4 1/8	2 1/16
Angle	—	2 1/16

## Features

- 1-Inch Screwed End Connections
- Forged Steel Body (A350-LF2)
- 4000 PSI W.P.
- Direct or Reverse Non-Adjustable Actuator
- Stainless Steel Trim
- Optional Carbide Trim Available
- Meets NACE MR0175 2002
- Threaded Bonnet Closure
- Temperature Range -20°F to 180°F

## MAXIMUM DIFFERENTIAL PRESSURES ( $\Delta P$ )<sup>1</sup> NO. 9 ACTUATOR

Orifice Size	Flow Direction	Supply <sup>2</sup> Pressure	Non-Adjustable Actuator <sup>3</sup>	
			9BA2 Direct	9BA4 Reverse
0.250" (1/4")	Under Seat	20	3200	4000
	Over Seat	30	4000	4000
0.375" (3/8")	Under Seat	20	4000	2100
	Over Seat	30	4000	2100
0.50" (1/2")	Under Seat	20	1200	2100
	Over Seat	30	4000	2100
0.50" (1/2")	Under Seat	20	300	1150
	Over Seat	30	1600	1150
0.50" (1/2")	Under Seat	20	4000	4000
	Over Seat	30	4000	4000

(1.) Maximum  $\Delta P = P_1 - P_2$  where  $P_2 = 0$  PSIG. Maximum  $\Delta P$  cannot exceed maximum valve working pressure.

(2.) Actuator supply pressure required to fully stroke valve.

(3.)  $\Delta P$  supply pressure based on a 3 PSIG Actuator Spring Pre-Load.

**NORRIS**  
PRODUCTION SOLUTIONS

A DOVER COMPANY

**NORRIS SEAL**  
A DOVER COMPANY

*Engineered  
Performance*



## How to Order

1. Select series number – Series 2275 (Std. NACE) or Series 2276 (NACE/Viton Diaphragm)
2. Select proper model code from charts below
3. Select trim size and material, for example, 1/4" 316 SS.

BODY MATERIAL		
Type	Code	
NACE MR0175 2002	N	

BODY CONNECTION		
Type	Code	
Screwed (NPT)	S	

SERIES		
2275		
2276		

BODY PRESSURE RATING		
WOG	ANSI	Code
4000	—	40

ACTUATOR TYPE	
Style	Code
Reverse Non-Adjustable	R
Direct Non-Adjustable	D

SERIES 1.00" DUMP VALVE			
Maximum Flow Coefficients (Cv) <sup>1</sup>			
Orifice Size	Flow Direction	Flow Coefficient (Cv) <sup>2</sup>	
		Globe Flow	Angle Flow
0.250"	Under Seat	2.6	2.8
	Over Seat	3.0	3.5
0.375"	Under Seat	3.5	4.8
	Over Seat	3.9	5.1
0.500"	Under Seat	5.5	5.6
	Over Seat	5.5	6.0

ACTUATOR SIZE	
Code	Nom. Diameter
9	9.5

ACTUATOR SPRINGS	
Code	Non-Adjustable
BA2	Direct
BA4	Reverse

PACKING	
Code	Material
—	Teflon

SEALS/DIAPHRAGM MATERIAL		
Code	Seals	Diaphragm
V	Viton	Neoprene (Std.)
O	Viton (2276)	Viton(2276)
7	HSN	Neoprene (Std.)
8	HSN	Viton(2276)

BODY STYLE	
Code	Type
T	Tee

TRIM MATERIAL	
Standard/NACE	316 SS
Optional/NACE	Carbide/316 SS

WEIGHT	
22 lb.	

**2275 SN40RTV-9BA4**

Notes: (1) As determined per ISA-S39.2 test method.  
(2) Cv values with valve in full open position.

Please note: not all available options are shown.

Please contact your Norriseal representative for more details and assistance in specifying the optimal solution for your application.



Engineered Performance

11122 West Little York • Houston, Texas 77041

Tel: 713-466-3552 • Fax: 713-896-7386

www.norriseal.com